

Safety hinge switches

Safety hinge switches are used for the position monitoring of hard guards that can rotate (e. g. protective hoods) by means of a monitoring switch (without guard interlocking) integrated into the hinge.

/// S400



The S400 safety hinge switches unite the safety switch and door hinge functions in one component. Because external actuators are not required with this switch, it can also be used problem-free in environments with high dust concentration levels or with heavy particle loads (degrees of protection IP 67). By means of a repeatable setting (switching angle alignment), fault-free function is ensured even with warped or misaligned doors.

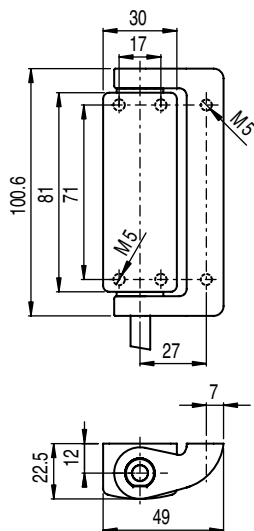


Benefits:

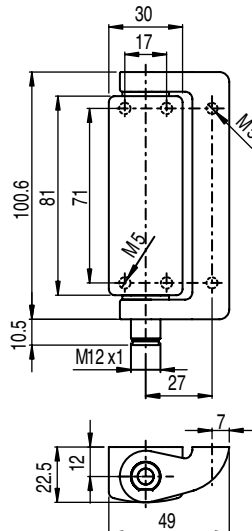
- 180 ° maximum opening angle of the protective device
- Repeatable setting (switching angle alignment) with skewed or misaligned doors
- Compact, rounded-off construction design in robust metal version, degree of protection IP 67
- Encapsulated, internal actuator guarantees proper functioning, even under difficult conditions
- Highly tamper proof due to covered screws
- Cable or M12 connection

Part no.	Part description	Contact allocation	Housing material	Connection	Side of cable entry
63000411	S400-M4-CB2PUR-W	2NC + 1NO, slow-action contact	Metal	Cable, 7-wire, 2,000 mm, PUR	Wall side
63000402	S400-M4CB2-T	2NC + 1NO, slow-action contact	Metal	Cable, 7-wire, 2,000 mm, PVC	From above (with left installation)
63000400	S400-M4CB2-B	2NC + 1NO, slow-action contact	Metal	Cable, 7-wire, 2,000 mm, PVC	From below (with left installation)
63000406	S400-M4-CB02M12-W	2NC + 1NO, slow-action contact	Metal	Cable with connector, M12, 8-pin, metal, 200 mm, PVC	Wall side
63000403	S400-M4M12-T	2NC + 1NO, slow-action contact	Metal	Connector, M12, 8-pin, metal	From above (with left installation)
63000401	S400-M4M12-B	2NC + 1NO, slow-action contact	Metal	Connector, M12, 8-pin, metal	From below (with left installation)
63000407	S400-M1-CB02M12-W	2NC + 1NO, snap-action contact	Metal	Cable with connector, M12, 8-pin, metal, 200 mm, PVC	Wall side

Dimensioned drawings: S400



S400-M4CB2-B safety hinge switches



S400-M4M12-B safety hinge switches

Switching sensors

Measuring sensors

Products for safety at work

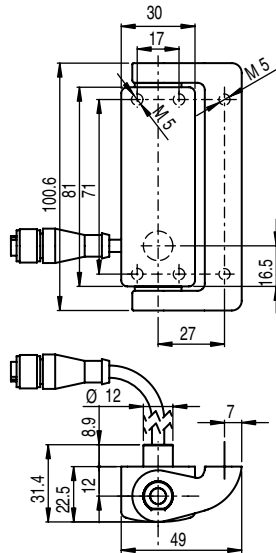
Identification

Data transmission / Control components

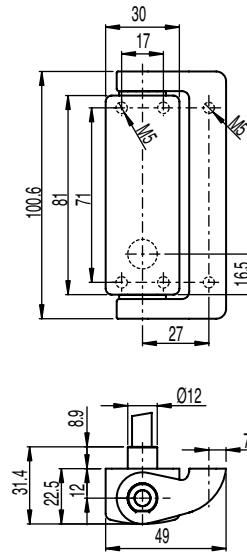
Industrial image processing

Accessories

Dimensioned drawings: S400



S400-Mx-CB02M12-W safety hinge switches



S400-M4-CB2PUR-W safety hinge switches

ACCESSORIES: S400

Connection technology

Connection cables

Part no.	Part description	Connection 1	No. of pins	Cable length	Sheathing material
678060	CB-M12-5000E-8GF	Connector, M12, axial, female	8-pin	5,000 mm	PUR
678061	CB-M12-10000E-8GF	Connector, M12, axial, female	8-pin	10,000 mm	PUR
678062	CB-M12-15000E-8GF	Connector, M12, axial, female	8-pin	15,000 mm	PUR
678063	CB-M12-25000E-8GF	Connector, M12, axial, female	8-pin	25,000 mm	PUR

Further connection cables can be found on our website

Mounting

Part no.	Part description	Description	Material	Design	Type of fastening	Dimensions
63000770	AC-H-S400	Additional hinge	Metal, ZAMAK		Mounting thread	49 mm × 22.5 mm × 100.6 mm
63000775	AC-H-S400-S	Additional hinge	Metal, ZAMAK		Mounting thread	44.5 mm × 22.5 mm × 65 mm
63000772	AC-MP1-S400	Mounting plate set	Metal	Mounting plate with L-angle		
63000771	AC-MP3-S400	Mounting plate set	Metal	Mounting plate		
63000774	AC-SEPL-S4xx	Safety plug				